

# 2015 企业社会责任报告

民生超市 百姓永辉



---

## 重要提示

本公司及董事会全体成员保证信息披露的内容真实、准确、完整，不存在虚假记载、误导性陈述或重大遗漏。

---

## 目录

<b>P</b>	
.....	4
.....	5
.....	6
.....	7
<b>G</b>	
.....	10
.....	12
.....	14
.....	15
<b>M</b>	
.....	18
.....	21
.....	26
<b>S</b>	
.....	28
.....	33
.....	38
<b>A</b>	
.....	41
.....	42

## 报告规范

6

2015 1 1 12 31

2015

2015

CASS-CSR 2.0

ISO26000

<http://www.sse.com.cn>

<http://www.yonghui.com.cn>

86-591-83787308 83762203

86-591-83787308 83762990

E-MAIL bod.yh@yonghui.com.cn

5

350002

## 公司简介

2001

500

601933

570

500

19

2014

12

6

2

## 荣誉表

	2015	
2015 2		
2015 2	BrandZ 100 334	WPP
2015 2		2014
2015 4	2014	12 6
2015 4	2015	2015
2015 7	2015 500 2014 26	150
2015 7	2014	13
2015 8	500 2014 39	340
2015 8	2014	
2015 10	2015	2015 50
2015 11	2015	
2015 11	2015	
2015 11	2015 CCFA	

## 年度大事记

### 领导关怀

1

2

2

2

2

2

2

11

11

### 市场拓展

6

9

11

2

12 2015

8

3

3

3

62

2

24

19

### 全球垂直供应链

3

7

9

9

11

12

( )

### 战略合作

4

21.17%

5

( )

8

2015

A

717694946

9

21.17%

10

12

020



## 职工活动

3	2015	2014
---	------	------

8

10	2015
----	------

## 慈善公益

2	32100	3210
---	-------	------

12

2

## 行业展会

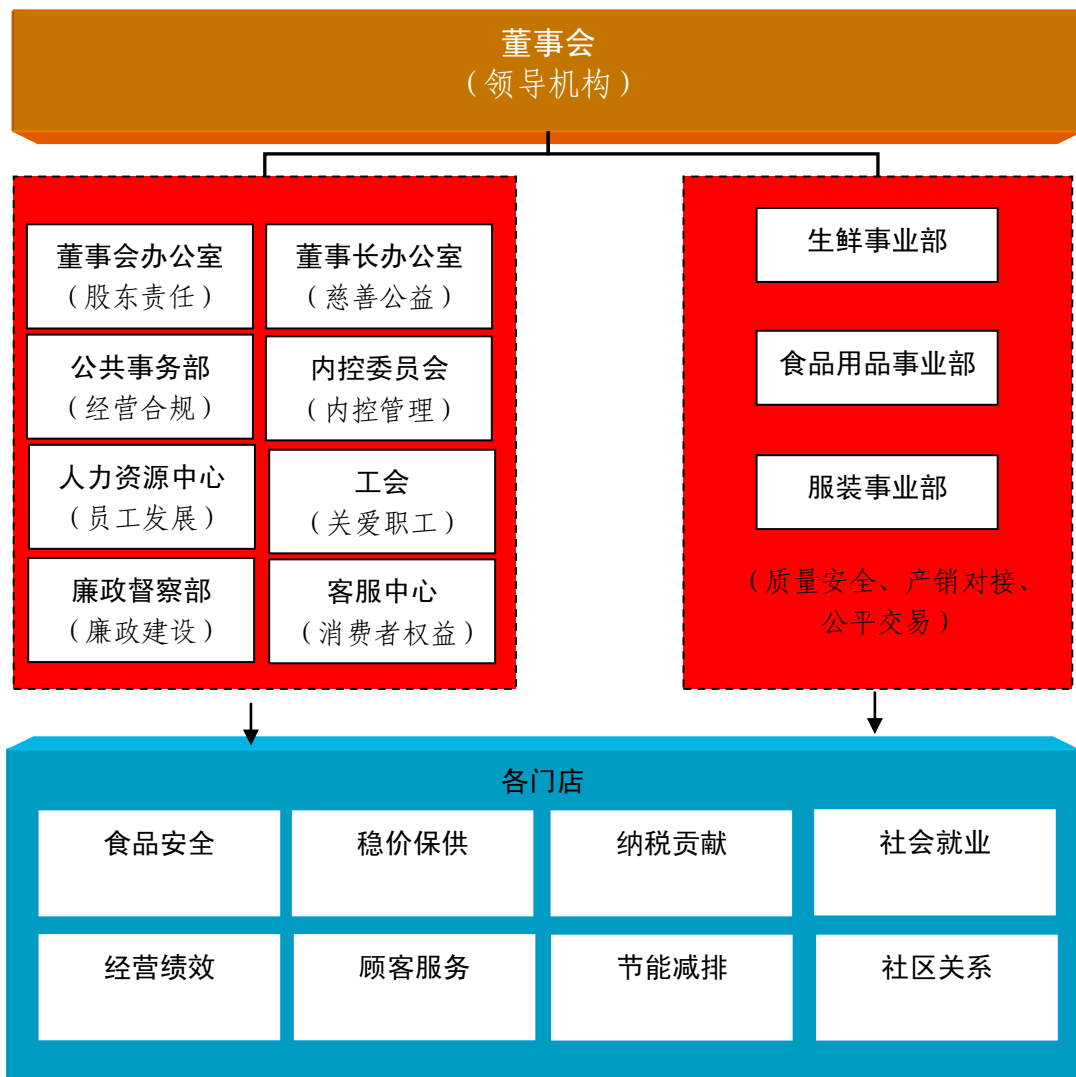
10

11

## 责任战略

	“ ”
	• “ ”
	•


## 责任治理





## 责任绩效

1                    2015   3   14   -15                    2015  
2014   “                    ”                    “                    ”

2015   5   27                    2014  
2014

2015

2                    2004  
2015                    3210  
20.76%                    17  
32100

3                    LED

## 责任沟通

	<ul style="list-style-type: none"> <li>✓</li> <li>✓</li> <li>✓</li> <li>✓</li> <li>✓</li> <li>✓</li> </ul>	<ul style="list-style-type: none"> <li>✓</li> <li>✓</li> <li>✓</li> <li>✓</li> <li>✓</li> <li>✓</li> <li>✓</li> </ul>
	<ul style="list-style-type: none"> <li>✓</li> <li>✓</li> </ul>	<ul style="list-style-type: none"> <li>✓</li> <li>✓</li> <li>✓</li> </ul>
	<ul style="list-style-type: none"> <li>✓</li> <li>✓</li> </ul>	<ul style="list-style-type: none"> <li>✓</li> <li>✓</li> <li>✓</li> </ul>
	<ul style="list-style-type: none"> <li>✓</li> <li>✓</li> <li>✓</li> <li>✓</li> <li>✓</li> </ul>	<ul style="list-style-type: none"> <li>✓</li> <li>✓</li> <li>✓</li> <li>✓</li> <li>✓</li> <li>✓</li> <li>✓</li> </ul>
	<ul style="list-style-type: none"> <li>✓</li> <li>✓</li> <li>✓</li> <li>✓</li> <li>✓</li> </ul>	<ul style="list-style-type: none"> <li>✓</li> <li>✓</li> <li>✓</li> <li>✓</li> <li>✓</li> <li>✓</li> </ul>
	<ul style="list-style-type: none"> <li>✓</li> <li>✓</li> <li>✓</li> </ul>	<ul style="list-style-type: none"> <li>✓</li> <li>✓</li> <li>✓</li> </ul>

	✓	✓ ✓ ✓ ✓	1933
	✓ ✓ ✓	✓ ✓ ✓ ✓	
	✓ ✓ ✓	✓ ✓ ✓	

1 2015 1

2

2 2015 2

3 2015 2

4 2015 3

2015

2014

5 2015 8

6 2015 10

2015

7 2015 12

2015



1	2015	1				3210
2	2015	1		150		
3	2015	2		“		”
				”		
4	2015	3				
5	2015	3				20
6	2015	10				

## 股东权益

25 2015 9

9 25 2015

1

2013

2

2015 4 30

2014 2015

3

4

5

2015 7 8

3

2%

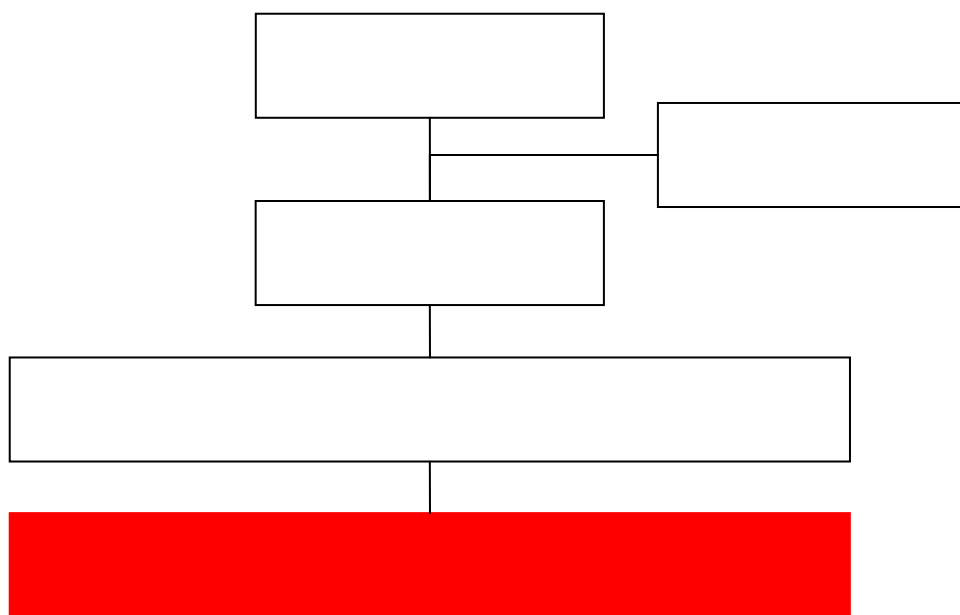
8135

6

2015 9 28 9 29

				2015	62
2015			398		
2015	5	27	2014		2014
		2014			488165346
			4067536108		
	10		1. 2001		

## 消费者权益



1

2

3

4

2015 2 (OC&CStrategy Consultants 2014 OC&C  
2014 OC&C

4

2015 5

2015

1

12315

12315

2

2015 1

7

/

1

2

8008581030

3

4

5

6 12315

1

2

3 2012 4 2

1 40000

110

2

3 550 20

4 350

5 108

2015 6

6

7 300

1

2

3

4

,

1

12315

2



3

2015

2016 2

5

10

2015

1000

98%

800

800

97.8%

## 供应商权益

2015 1

160

2015 5

22

71 115

2015 7

2015 9

4

2015 10

“2015

”

400

2015 11

2015 11

2015 11

“ ” “ ”

2015 3 26

2015 3000

2015

3000

2011 12

2012

2010 2015

2015 3

## 政府责任

1

2

1

2

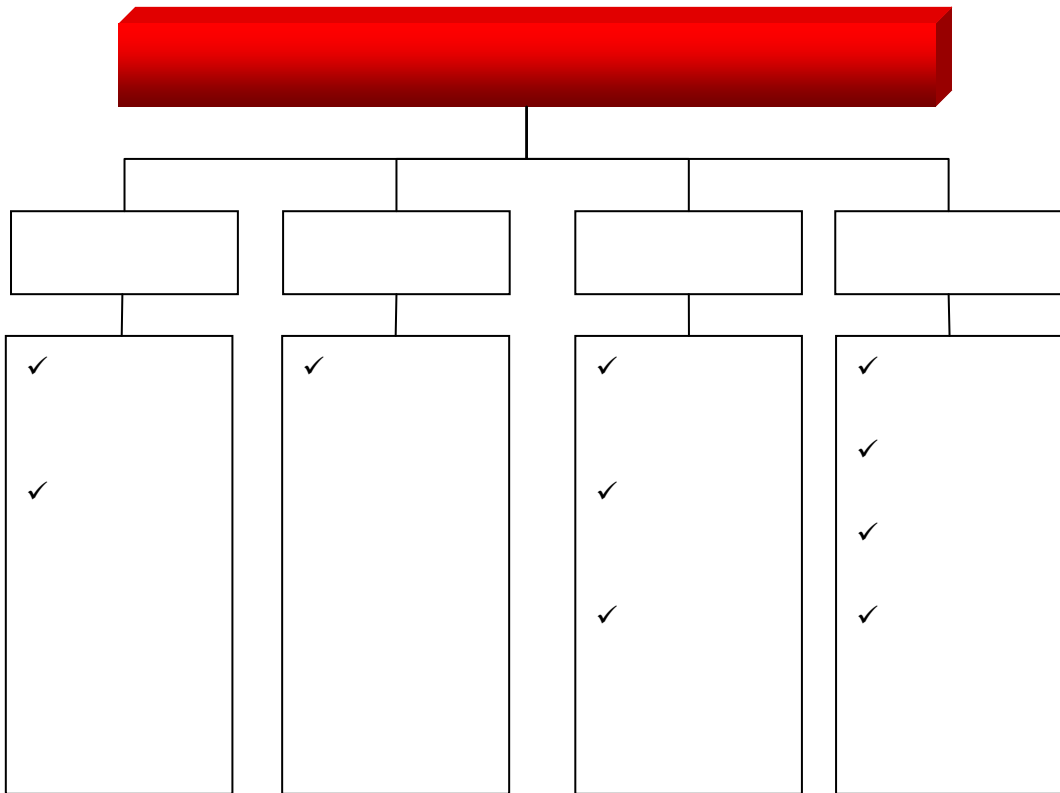
1

2

1

2

3



1

2

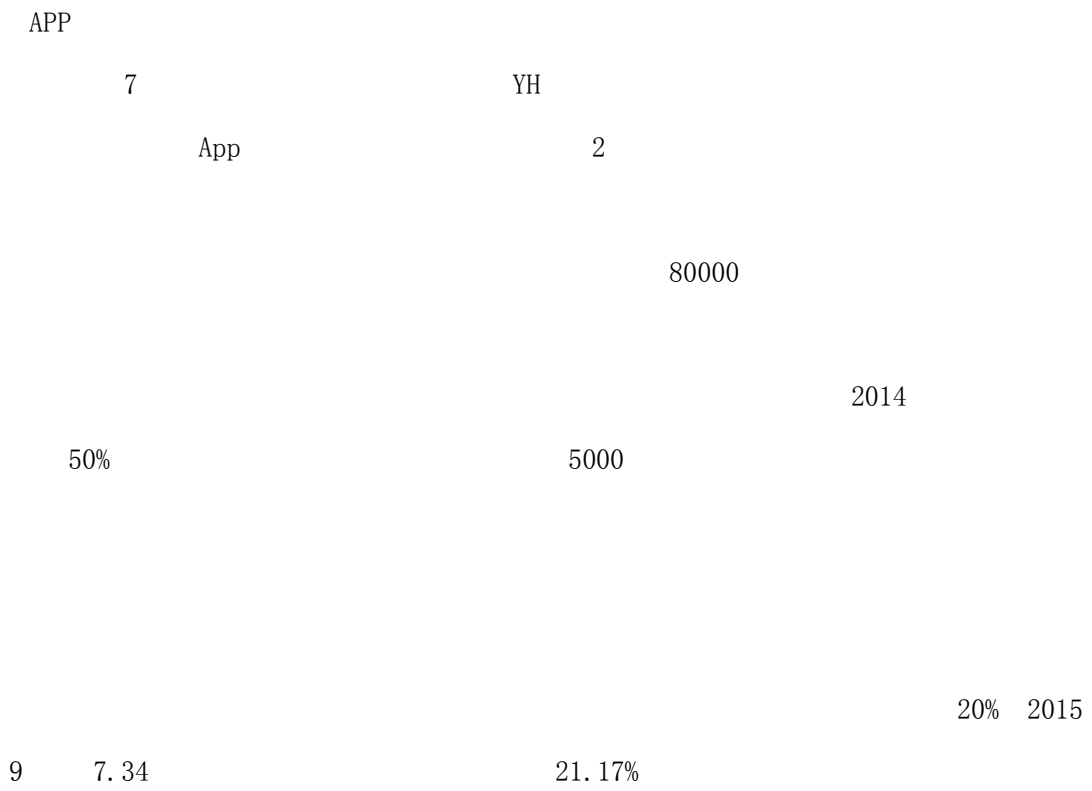
3

CJ

+

+

2



2011 12 13

2011 59

2015 204489

2

3321

33210 2004

11 150000

2012

1500 150 2015



## 职工权益保护

1

2

2015

98.5

1

2

3000

2

2011

2015 10

21                  39                  51

3

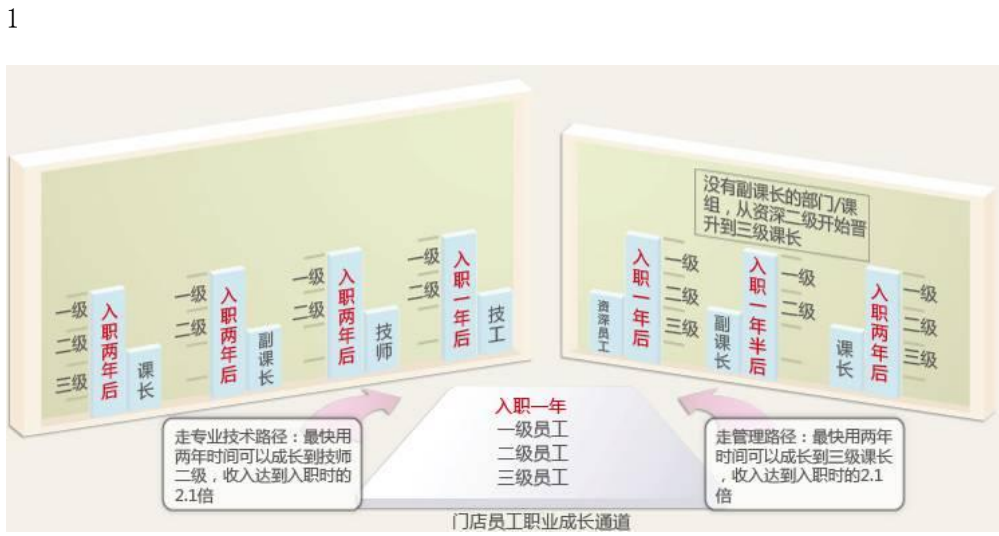
2005 4                  2015

186

2013 5

2015 4

100



3

2015 3

2015

2014

4

2012 2013

2014

1 /

2

0A

3 0A

0A

4

3000 50000

	75,033
	146
	75,179
	68,682
	1,281
	1,255
	3,961
	75,179
	38,179
/	27,177
	7,125
	2,645
	53
	75,179

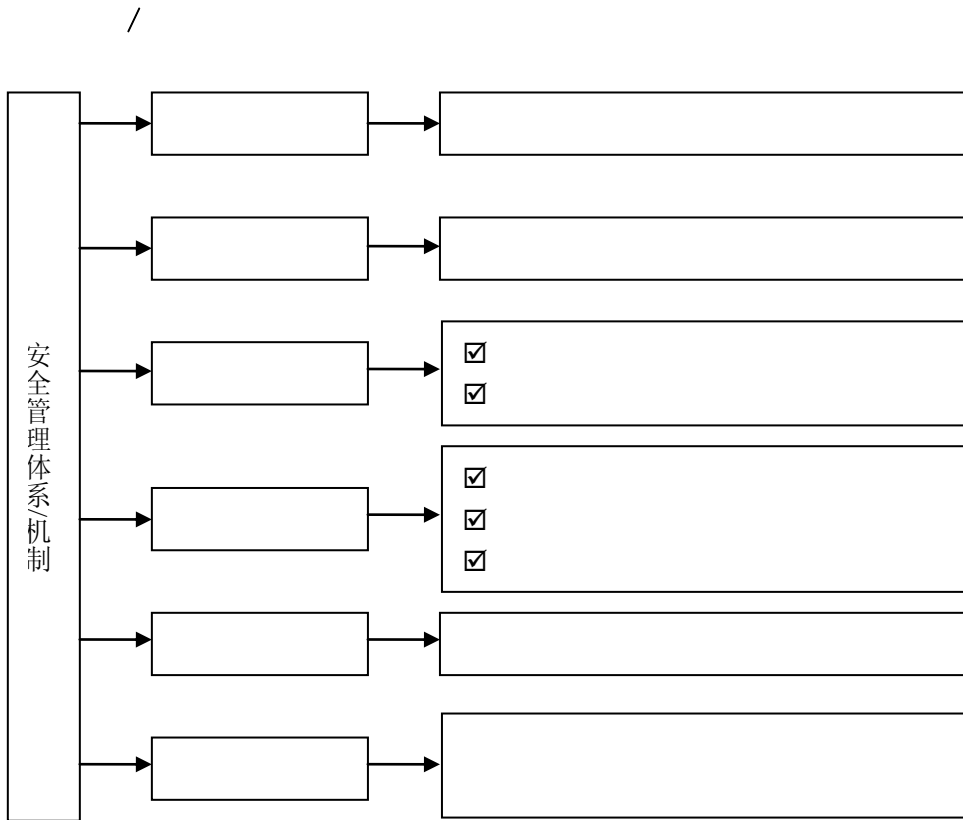
/

100%

90%



## 安全和环保



5

1 E POP

2

/

1

1

LED

2

T8

3

1 2

2

1

2

3

/

1	OA	OA	2013	OA
---	----	----	------	----

2

3

/

1

2



## 未来展望



## 读者意见反馈

(

1					
2					
3					
4					

?

\_\_\_\_\_

\_\_\_\_\_

\_\_\_\_\_ E-Mail \_\_\_\_\_

\_\_\_\_\_

5

350002

86-591-83787308 83762203 86-591-83787308 83762990  
bod.yh@yonghui.com.cn

衷心感谢您的关注!



# 永辉超市

地址：中国福建省福州市鼓楼区西二环中路436号

Add: No.436, West Erhuan Middle Road, Gulou District, Fuzhou, Fujian, China

邮政编码(P.C.)：350002

电话(Tel)：(86)591-8376 2200

传真(Fax)：(86)591-8376 2990

全国免费客服电话(Service Tel)：800-858-1030

永辉官方网站(Http)：www.yonghui.com.cn